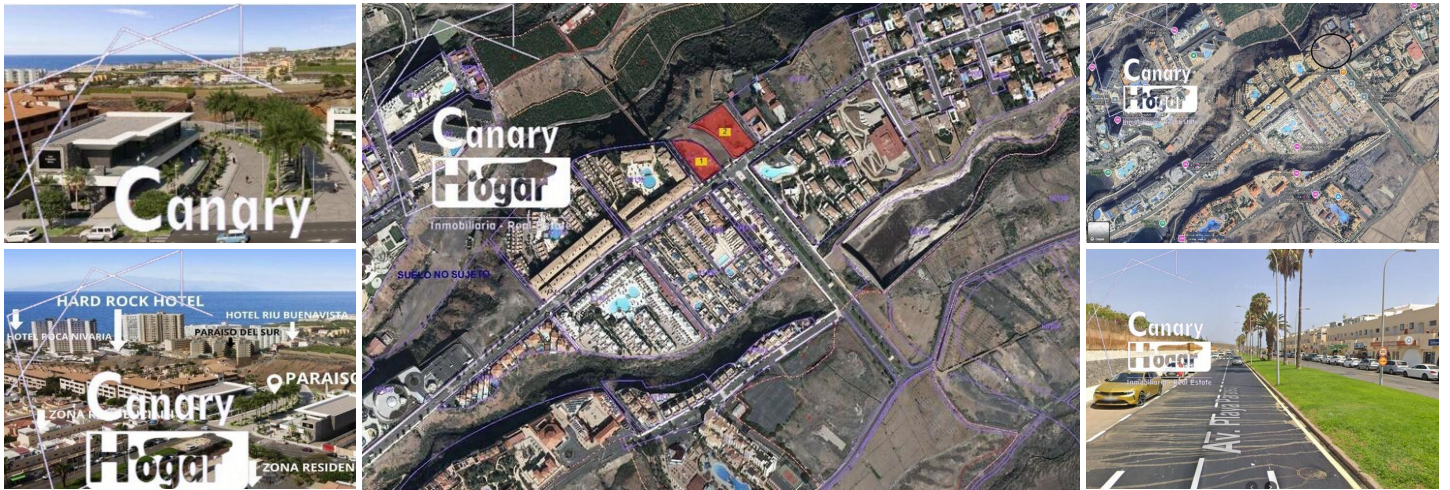







Landa till salu i Adeje, Tenerife



8.900.000€



Commercial land is unique and has enormous possibilities...” Words like these are easy to hear when you take a walk through Playa Paraíso. Very soon the road from the cove will open directly to Playa Paraíso, this is a great incentive, and it is two kilometers from the cove. Playa Paraíso was also the micro tourist destination with the best indicators in 2021, registering a 117% increase in overnight stays compared to the previous year, going from 315,680 to 686,743. The plots of 5000m2 in total are located in a place that will make you fall in love with its beauty and with a very unique power of attraction that never goes unnoticed, in the area of greatest tourist development in the Canary Islands, very close to the famous Hard Rock Hotel, as well as the majestic Bahía Príncipe Sunlight Costa Adeje Hotel and the new H10 Atlantic Sunset. Land area 1: 3000 m²~Land area 2: 2000 m²~Total project area: 6,821 m² above ground level, plus basement (parking)~Buildable area: approx. 9,000 m²~Maximum occupancy: 50% Height above ground level: 3 floors of 3.50 m~Type: consolidated urban. Use: commercial / hospitality / leisure. Parking: 1 or 2 floors~**To buy the land: €8,900,000 euros, 10% to reserve the land, 90% upon receipt of the building permit~**To rent the land without surface area: €65,000 / month. Minimum rental contract 30 years “~n

 0 sovrum
 5.000m² Tomtstorlek
 Vistas al mar

 0 badrum
 Light

 9.000m² Bygg storlek
 Water