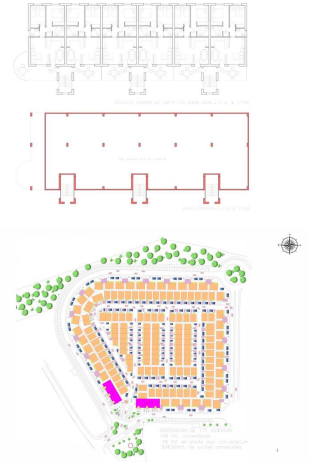
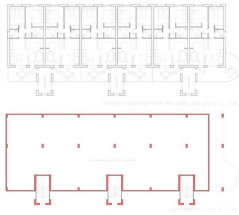
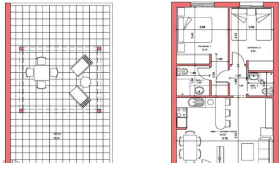


2 sovrum Villa till salu i Fuente Alamo, Murcia

164.627€



NEW BUILD BUNGALOWS IN FUENTE ALAMO, MURCIA

New Build residential of bungalow apartments in in Fuente Álamo, Murcia.

Ground floor bungalows with private garden and top floor bungalows with private solarium.

This location offers an exceptional natural setting, away from the hustle and bustle of the big cities and the tourist pressure of the coast. Furthermore, we are committed to working from a sustainable development perspective, minimising our environmental impact and maximising integration with the local community. Here your dreams of a peaceful and sustainable lifestyle come true. Imagine waking up every morning in a stunning natural setting, surrounded by serene landscapes and the unique beauty of the Murcia countryside.

New build projects prioritise energy efficiency, the use of environmentally friendly materials and harmonious integration with the rural environment. From property design to development planning to reduce our carbon footprint and promote responsible practices in all operations.















Development giving priority to energy efficiency and community integration to create high quality housing in harmony with the natural environment.

Pre-installation of ducted air conditioning system, hot / cold, installation of machines in the options.

Video intercom system.

Security access door lacquered in colour, with lock and anti-vandalism security fittings.

Wardrobes with heat lined on the inside, lacquered in white.

- | | | |
|--|--|---|
|  2 sovrum |  2 badrum |  72m ² Bygg storlek |
|  Gated |  Solarium: Yes |  Number of Parking Spaces: 1 |
|  Air Conditioning: Pre-Installed |  Near Schools |  Near Commercial Center |
|  Useable Build Space: 55 Msq. |  Double Bedrooms: 2 |  Location: Rural, Urbanisation |
|  Beach: 15000 Meters |  Terrace: 71 Msq. | |