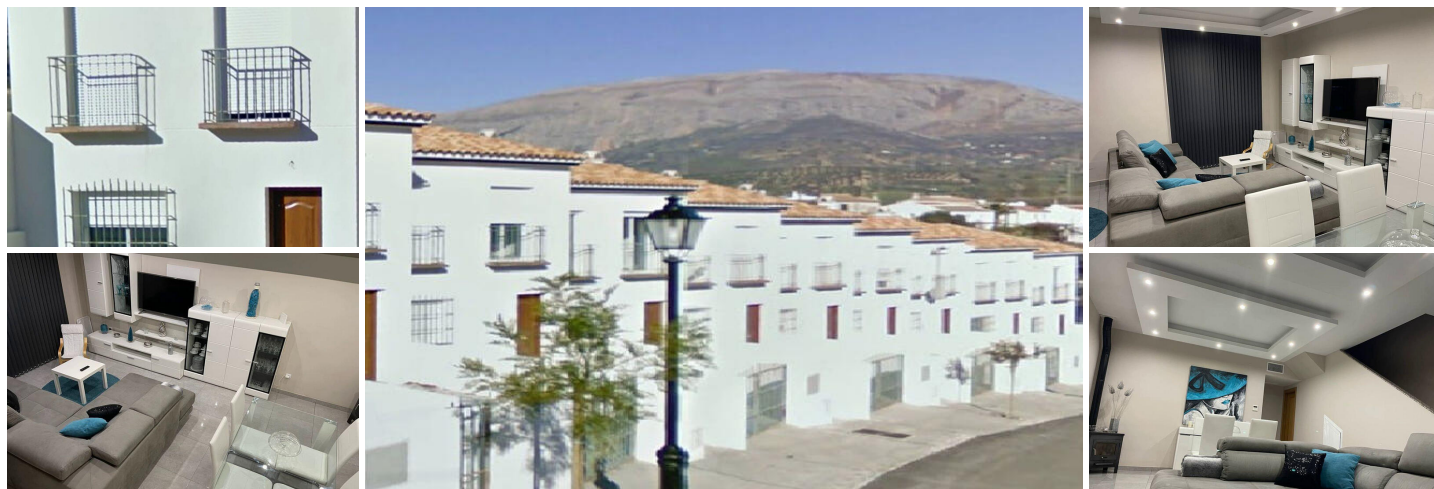


3 спальная комната Деревенский Дом продается в Alora, Málaga

197.000€



Semi-Detached House, Las Mellizas near Alora, inland Malaga
3 Bedrooms, 3 Bathrooms, Built 115 m², Garden/Plot 100 m².

The Property is located close to the Hamlet of Las Mellizas which has a Railway station to Malaga and Antequera. Just 7 kms from the Town of Alora which has all the amenities you need like Shops supermarket banks, medical centre etc.

It is located in a modern complex of similar semi detached houses, these share community gardens and a communal Swimming Pool.

It is a short drive from El Choro and the Caminito del Rey and the lakes of Ardales with their beaches

To the front of the property is a Patio / Private parking area, there is also plenty of street parking.

The ground floor has a spacious open plan Lounge with Dining room, a cloakroom WC.

There is a Modern fully fitted Kitchen Diner. with a Utility Laundry room.

Access out to the rear Patio and community areas and Pool.

Up stairs there is 3 bedrooms one with an ensuite and a Family bathroom.

There is air conditioning and individual heating in all rooms with a log fire in the Lounge..

The Location is an ideal Holiday rental area with demand for the Caminito del Rey and Ardales lakes increasing year on year.

The local rail station offer access direct to El Choro Antequera and Malaga City with connections to the airport and Costa del Sol line

- | | | |
|---|--|---|
|  3 спальни |  3 ванные комнаты |  115m ² Размер сборки |
|  100m ² Размер участка |  Бассейн |  Setting - Mountain Pueblo |
|  Setting - Close To Town |  Setting - Close To Forest |  Condition - Good |
|  Pool - Communal |  Climate Control - Air Conditioning |  Climate Control - Hot A/C |
|  Climate Control - Cold A/C |  Climate Control - Fireplace |  Views - Country |
|  Views - Panoramic |  Features - Covered Terrace |  Features - Fitted Wardrobes |
|  Features - Private Terrace |  Features - WiFi |  Features - Ensuite Bathroom |
|  Features - Double Glazing |  Kitchen - Fully Fitted |  Garden - Communal |