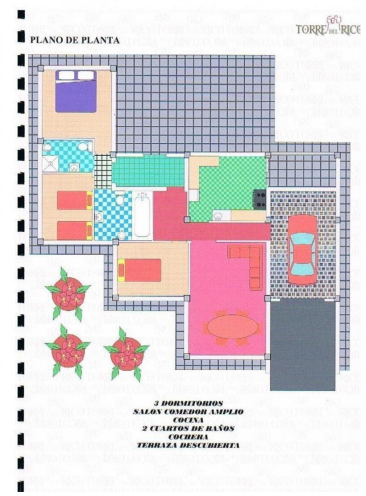
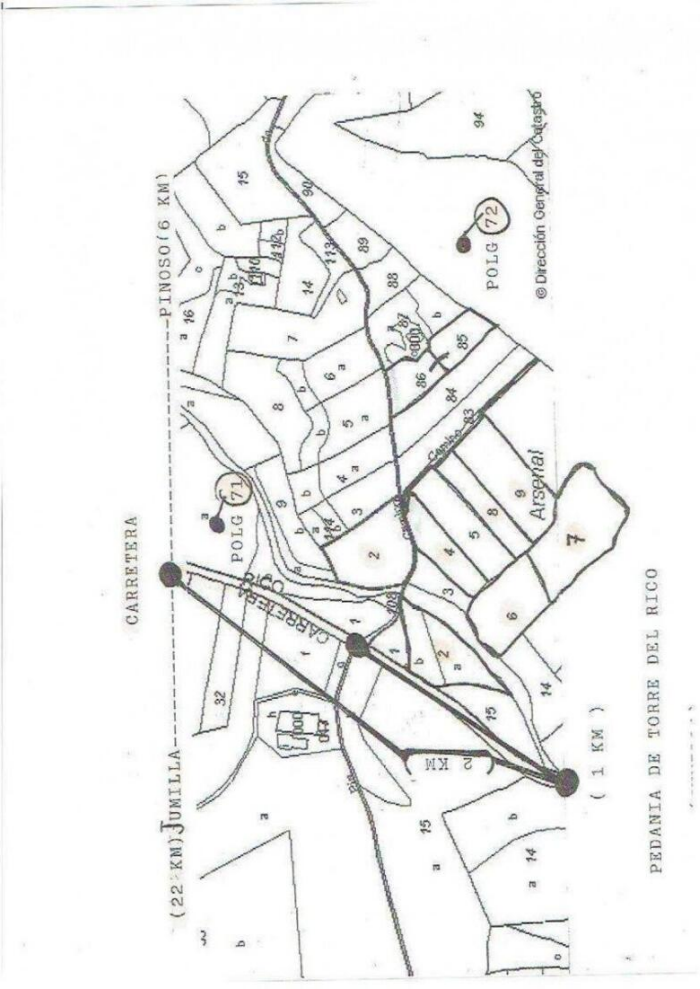
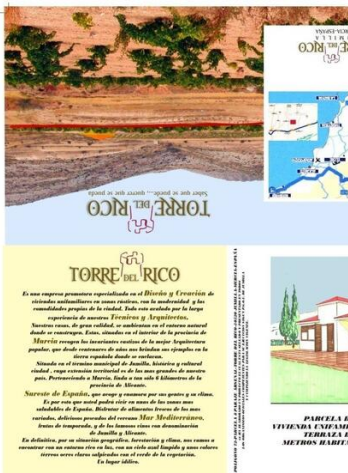


Другие продается в Torrevieja, Alicante
26.995€



MEMORIA DE

Las Viviendas
 Las viviendas se edificaran en un terreno de 133,50 M2. = 65995€9,432 M2 = 41.350 €9,489 M2 = 41.585 €10,285 M2 = 44.595€11,030 M2 = 47.500 €

Las Casas
 La parcela destinada a vivienda se edificara en un terreno de 133,50 M2. = 65995€9,432 M2 = 41.350 €9,489 M2 = 41.585 €10,285 M2 = 44.595€11,030 M2 = 47.500 €

Las Parcelas
 Las parcelas se edificaran en un terreno de 133,50 M2. = 65995€9,432 M2 = 41.350 €9,489 M2 = 41.585 €10,285 M2 = 44.595€11,030 M2 = 47.500 €

Las Parcelas y Alcobados
 Las parcelas se edificaran en un terreno de 133,50 M2. = 65995€9,432 M2 = 41.350 €9,489 M2 = 41.585 €10,285 M2 = 44.595€11,030 M2 = 47.500 €


Las Parcelas
 Las parcelas se edificaran en un terreno de 133,50 M2. = 65995€9,432 M2 = 41.350 €9,489 M2 = 41.585 €10,285 M2 = 44.595€11,030 M2 = 47.500 €

Las Parcelas
 Las parcelas se edificaran en un terreno de 133,50 M2. = 65995€9,432 M2 = 41.350 €9,489 M2 = 41.585 €10,285 M2 = 44.595€11,030 M2 = 47.500 €

We have a plot of:5,394 M2 = 26,995€6.046 M2. This plot has a structure (which can be seen in the photos, and has a work license granted for a single-family home of 133, 50 M2. = 65995€9,432 M2 = 41.350 €9,489 M2 = 41.585 €10,285 M2 = 44.595€11,030 M2 = 47.500 €The plots have installation of Electric Tower to 50 M2 and installation of drinking water meter for each plot, without registering but the hitch is off.If you are interested in buying a plot for you to build the house of your dreams, this is your opportunity. We can also advise you with the creation of your new home. If you want a large plot to plant, to rent etc. Do not miss this opportunity! Do not hesitate to call us to ask for more information.If you have liked this property do not hesitate to contact us to arrange a visit, we will be happy to help you!We are specialists in the Costa Blanca and Costa Calida specializing in the Alicante and Murcia Inland regions with particular emphasis on Elda, Pinoso, Aspe, Elche and surrounding areas. We are an established, well known and trusted company that has built a solid reputation among buyers and sellers since we began trading in 2004. We offer a complete service with no hidden charges or surprises, starting with sourcing the property, right through to completion, and an unrivaled after sales service which includes property management, building services, and general help and advice to make your new house a home. With a portfolio of well over 1400 properties for sale, we are confident that we can help, so just let us know your preferred property, budget and location, and we will do the rest.

 0 спальни

 0 ванные комнаты

 5.394m² Размер участка