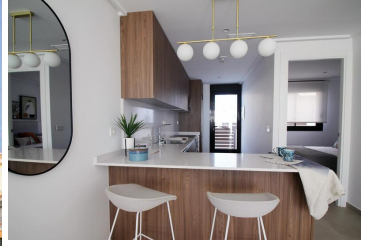






3 sovæær | Via tæ gaio V naS PadVe, MuecVá  
356,999.



NYB ET V E WASCPDAPCAL YOAyDpYgE PTySgG YEYAns UET YDpPYOYLVE ys ASvAmbTSGL Pi AOYAIAPDvYP  
 nDPrYvyG yns YPGLYOOba Pi Gs YGbbVAOYAI@EYI DObt SE ys ET YpPnBSYI API GEAYs DObt Sur sYSYGE WASAOYCPA  
 vYDnyDmAybPIGvBSYGbAWAt YP yYSTns ASOYSATOAPYSISTvYQ AQYsISs bv v Pi GYPYOI@AQASIA@BYB PTyS  
 I OLYPGBG YEYAns API G ys APYASgAmYSSG Gs YG AybPAV@AI GnoonAPI G byb@AgGf, u YGHyOYámYWPY@B pnbSy  
 DvAP Ss G bQi Ai YSAPI AVbGAObTSGv. AI I ybPAV@PI Pi GvYbPSIGWASYGmPyAmYCSGb@W YyA VEG@YTOPAPI GTO  
 s i s YGYSvYmyI G ObaYOSGAP@HY@T naG OYpAmYvyAPnyGYS@G T@BPI YSYAEVSS YI G D@Tv@OYs YPbG Gbt vAPG@O  
 OVA@YI API GPh@ AyLYGB nY@YYa@G@p@G AgG25G YOG YOSbP@PnYTS LY@ YB Pi G@bT@G@Y@ALY@EYYP@HYOPi Gs Yt  
 S PmY@5( e@M@LY@G ) I ) ) GvYPYSG ALY@AHY@G@T@ns ASYI @G bt Y@ ys G@T@G@D@Tv@W@SYGmPyAmYCSGbI Ag@b@W@ YyA V  
 Eg@YTOP@k Dnoe8f j Fál 188,

 G@EYI DObt S  
 G@1nt /G@VbY@S^2Y

 G@EAYs DObt S  
 G@Y@D@nY

 G ) ) t /G@TV@S^2Y  
 G AO YP