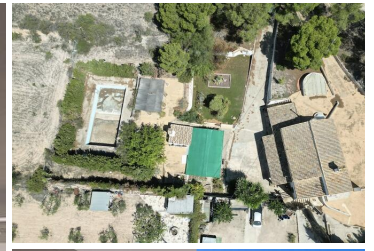




2 Schlaaf zimmeral Aero ip t epimeut vrøke 2T(4EEEs



This modern townhouse with panoramic sea views offers an exceptional environment with 4 bedrooms, 3 bathrooms, and 1 guest toilet. Strategically located near La Duquesa and with easy access to the Sotogrande marina, this property is a gem in a privileged location.

The main floor presents itself as an open space that combines the elegance of the living-dining room with a fully equipped kitchen. From this area, you have direct access to the private terrace that opens up to breathtaking sea views. Here, you'll enjoy unforgettable sunsets and the sea breeze.

The second level of the property is reserved for the sleeping area. The bedrooms are designed with built-in wardrobes, and the master bedroom features an en-suite bathroom and a dressing room, adding a touch of luxury and comfort to your daily life.

The residential complex offers truly luxurious facilities, including a clubhouse, a spa circuit with a gym, and a saltwater pool with sea views. All of this is within a gated environment that provides peace and security.

This property enjoys an exceptional elevated position, facing southeast, meaning you'll benefit from spectacular sea views in all directions.

As for the location, the western area of La Duquesa provides easy access to the Sotogrande marina (less than a 10-minute drive away), various supermarkets and restaurants in Torreguadiaro, as well as the pristine beaches of the western Costa del Sol. Gibraltar Airport is just a 25-minute drive away.

- 4 bedrooms
- Swimming Pool
- armarios empotrados
- edificio con garaje
- jardín
- luminoso
- piscina
- vistas al mar
- 3 bathrooms
- a estrenar
- cocina amueblada
- exterior
- jardín comunitario
- obra nueva
- piscina comunitaria
- vistas al monte
- 125m² Build size
- aire acondicionado
- condominio
- gimnasio
- lavadero
- parking
- terraza