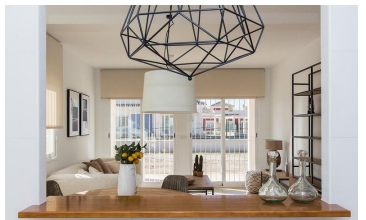
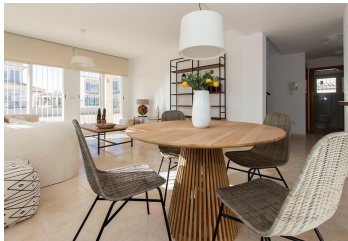


3 soverom Villa til salgs i Lorca, Murcia

220.000€



Take advantage of this offer now and be one of the first to acquire one of these beautiful detached villas. You can choose between 2, 3 and 4 bedrooms, distributed over one or two floors. The complex is called "Los Jardines de la Almenara" and is located on the RM-620 road, towards Pulpí, next to the Lorca-Águilas motorway. It has very easy access and is located close to all the amenities. In total, the complex will have more than 300 villas of which there are already 50 built and there are units still available. It will have a commercial area, private security for access control, a bike lane that will run through the entire urbanization and paddle tennis courts. Last houses already built are distributed in the 4 models indicated below, with plots of between 400 and 700 m²: A. Azalea model, on one level with 2 bedrooms and 2 bathrooms, and an area of 95 m². B. Lavender model, on one level with 3 bedrooms and 2 bathrooms and an area of 112 m². C. Iris model, on two levels with 3 bedrooms and 3 bathrooms and an area of 141 m². D. Violet model, on two levels with 4 bedrooms and 3 bathrooms and an area of 155 m². The photos of the property in this advert, is based on an Azalea model, which is distributed with a hallway, 2 double bedrooms (one of them with a dressing area), 2 complete bathrooms (one of them en suite), a spacious living room, a kitchen all open plan with the living room with the possibility of being closed off, porch, terrace, large garden and sun terrace. Characteristics and equipment: All the houses have fitted wardrobes in all the bedrooms, pre-installation of ducted air conditioning, pre-installation of radiators for heating, thermo-lacquered aluminium windows with Climalit-type double glazing, interior oak doors, fully fitted bathrooms, stoneware floors and a security front door. Call us now and request a viewing of the complex. In addition, shortly, you will also have the opportunity to visit our show house. Some nearby cities and points of interest are as follows: Cities:- Lorca: 13 km (15 minutes)- Aguilas: 23 km (19 minutes)- Mazarrón: 35 km (37 minutes)- Totana: 45 km (35 minutes) Some points of interest:- Golf course "Lorca Golf Course": 5 km (10 minutes)- Golf course "Aguilón Golf": 37 km (30 minutes)- Murcia International Airport: 84 km (55 minutes)- Camposol Golf: 59 Km (45 minutes)- Sierra Espuña Park: 65 km (1 hour)- Nearest beaches: 23 km (19 minutes)- "Parque Almenara" Shopping Center, where you will find cinemas, bowling alley, supermarket, shops : 10

🏠 3 soverom

🚿 2 bad

🏠 112m² Bygg størrelse

📏 517m² Tomtestørrelse



Eiendom som markedsføres av España Dream Properties

www.spainpropertyportal.com/no/