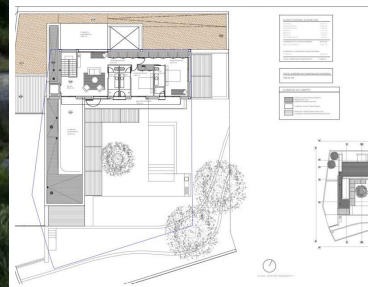
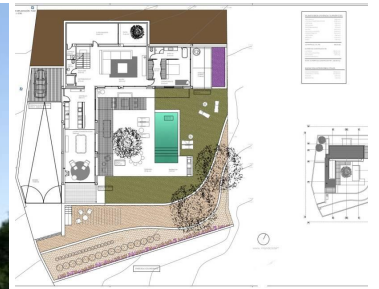


## 4 soverom Villa til salgs i Calpe, Alicante

2.450.000€



This beautiful Mediterranean new build villa is located on a sloping plot of 1079 m<sup>2</sup> which coincides with an excellent south-east orientation and offers beautiful views of the sea and the Peñon de Ifach. The exceptional thing about this plot is that it borders rustic land, so we have a house on urban land with the feeling of living in a Mediterranean forest with sea views. The decision was made to move as little earth as possible and to blend the villa into the natural relief of the plot. The house is designed in an L-shape which frees up the maximum space within the plot. One wing has two floors, the other only one. All rooms have a south or east orientation and enjoy extraordinary views of the sea and a Mediterranean forest. The house has a strong link with the outdoor spaces, the interior merges with the outside and this brings nature into the house. The outdoor areas are occupied most months of the year as an extension of this house. In the east wing of the ground floor there is the heart of the house, the kitchen overlooking the garden and pool, the dining room and a living room with fireplace, all this space is connected to the outside with bright, traditional Mediterranean verandas covered with reed. The south wing houses on the ground floor an attractive and spacious living room that is very open to the outside, but also opens onto an English patio, which gives us exceptional cross ventilation and great spatial richness. This light source also illuminates a multi-functional space, ideal for a music room, gym, yoga practice, games room... or the owner's dream. From the large living room you can access the master suite, giving you independence from the rest of the upstairs bedrooms. This bedroom has an attractive layout, where the dressing room and the bathroom connect in a circular manner without having to pass through the rest area, but the most attractive aspect is without a doubt the private connection from this suite with again a covered terrace with a Mediterranean veranda and view of the pine forest and the sea. leads, with two bedrooms and three bathrooms, linked to a continuous balcony overlooking the sea and the Ifach Rock. Finally, a living area (which can be converted into a third bedroom) with access to two opposite terraces, again cross ventilation runs through the house. More information on request.

🛏 4 soverom  
📏 1.079m<sup>2</sup> Tomtestørrelse

🚿 5 bad

🏠 675m<sup>2</sup> Bygg størrelse