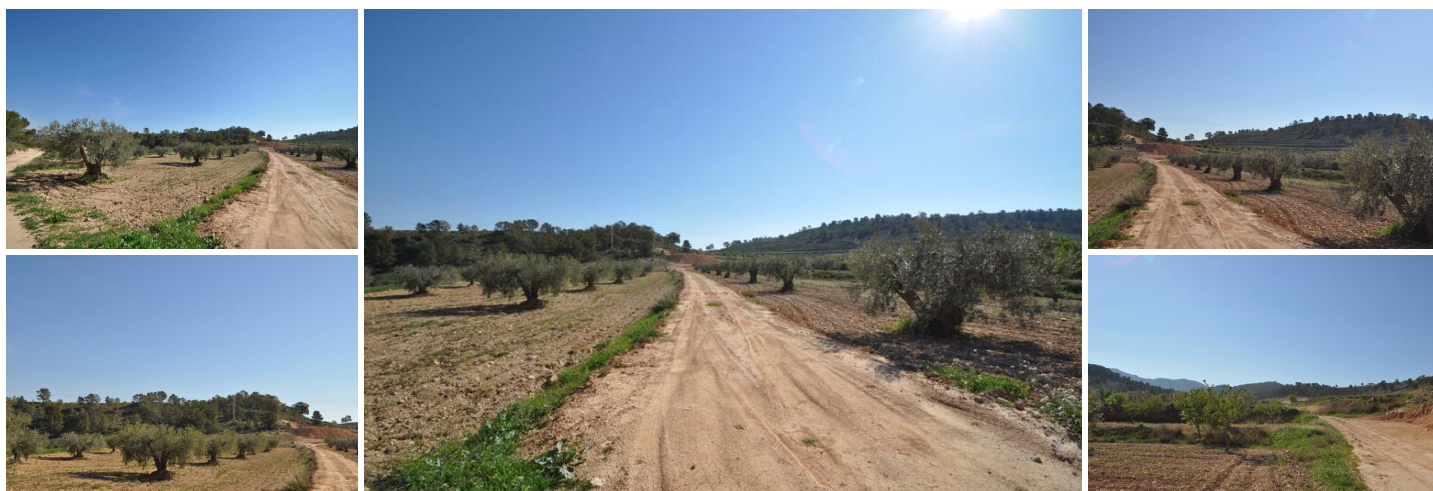


## Annen til salgs i Torrevieja, Alicante

26.995€



This plot is located in the stunning location of La zarza and is set on the edge of the National park of Sierra De La Plia. With walking and cycling track in abundance in this area makes it popular with tourists and locals alike. The plots will come with written confirmation from the town hall that the plots can be built on along with written confirmation that mains water and electricity are possible to the plot (quotes also available). In this area the town hall allow the following builds. Single level properties upto 250m<sup>2</sup> and two level of 200m<sup>2</sup> and 200m<sup>2</sup>. If this looks and sounds like the plot for you click on the link below to arrange your viewing today. We are specialists in the Costa Blanca and Costa Calida specialising in the Alicante and Murcia Inland regions with a particular emphasis on Elda, Pinoso, Aspe, Elche and surrounding areas. We are an established, well known and trusted company that has built a solid reputation amongst buyers and sellers since we began trading in 2004. We offer a complete service with no hidden charges or surprises, starting with sourcing the property, right through to completion, and an unrivalled after sales service which includes property management, building services, and general help and advice to make your new house a home. With a portfolio of well over 1400 properties for sale, we are confident that we can help, so just let us know your preferred property, budget and location, and we will do the rest.

🛏 0 soverom

🚿 0 bad

🏠 400m<sup>2</sup> Bygg størrelse

📏 6.736m<sup>2</sup> Tomtestørrelse