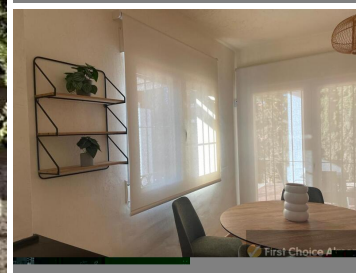
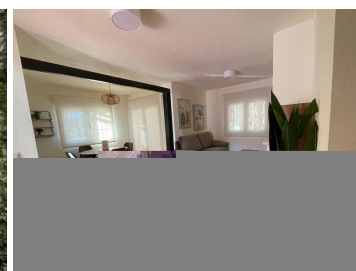


3 slaapkamer Villa Te koop in Fuente Alamo, Murcia

295.000€



LOS ALTOS DE LAS PALAS, LAS PALAS, FUENTE ALAMO, MURCIA, SPAIN NEW 3 bedrooms, 2 family size bathrooms Villa with private garden area for sale in Los Altos de Las Palas, Murcia. This villa is the MODEL AZALEA 3D. Key features include the semi covered roof top terrace, the covered porch entrance as well the generous porch leading to the garden. At Los Altos you will discover a high-quality construction, combined with fully fitted kitchens and bathrooms. Each property comes with brand NEW FURNITURE included in the price. The indoors photos are from the show flat. Externally, you will discover generously proportioned plots, surrounded by mature spruce and Mediterranean cypress trees creating the tranquil feeling of a rural village environment. The indoors photos are from the show flat. The Region de Murcia International Airport is less than 30 minutes drive and the 5 star Golf Resort of Hacienda Del Alamo a little over 20 minutes by car. There are several coastal towns and villages with fine sandy beaches less than 30 minutes away. The stunning Mediterranean city of Cartagena is also close by and the Regional capital Murcia City 40 minutes by car. BUILDING SPECIFICATIONS BRICKWORK Exterior façade enclosures with thermo clay block construction 29cm thick, finished with single-layer mortar in each colour. Interior partition walls with hollow brick construction. RENDERING AND PLASTERING Exterior surfaces rendered with single-layer mortar, rough finish. Interior surfaces will be finished with scratch finish gypsum plaster. False ceilings will be finished with plaster panels in bathrooms and toilets. ROOFS Sloping roofs will be covered with curved aged tiles, with thermal insulation on the roof slab, except on porches. Flat roofs will be covered with curved aged tiles, with thermal insulation the roof slab, except on porches. Flat roofs and terraces will be waterproofed and finished with anti-slip floor tiling. FLOORING Interior flooring will be finished with natural earthenware clay imitation tiles, 31x31cm and a skirting on the same material. Exterior flooring (pavements, porches, clothes drying areas, solarium) will be finished with antislip earthenware tiles, 31x31cm and a skirting of the same material. INTERIOR VERTICAL COATING AND LINING Bathrooms will be tiled with ceramic tiles up to a maximum height of 1.30m finished with decorative border tile and the bath and showers will be tiled up to the ceiling. A marble finish separating partition will be fitted between the shower and toilet. Kitchens will be

🛏 3 slaapkamers

📏 850m² Perceelgrootte

☑ No

🚿 2 badkamers

☑ kitchen furnished

🏠 180m² Bouwgrootte

☑ Nuevo