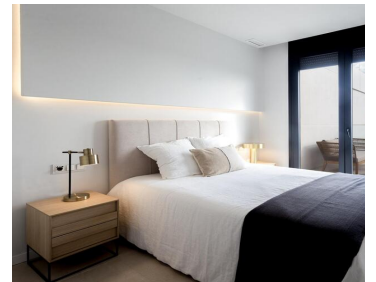
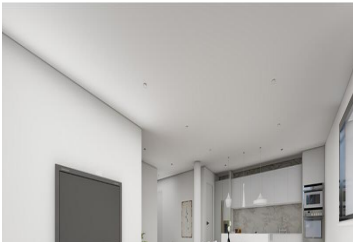




## Land Te koop in Campo de Golf, Murcia

180.000€



\*1ST LINE GOLF PLOT, for residential use in ALTAONA GOLF , with an area of 1009 m2, rectangular in shape. With a buildable area of 564,50m2 and a maximum floor print of 35% . Maximum height 6m. and 2 storeys.\*Altaona Golf and Country Village, an exclusive and secure residential estate, with 18-hole golf course, paddle, tennis court, with access to kms. of running hiking and cycling tracks; 24 / 7 private security; Club house / Restaurant; New Restaurant open now, and more services opening imminent. The resort is growing fast and increasing their properties values massively. NOW is the time to buy and build your dream home. 10 minutes to CORVERA AIRPORT, 10 minutes to the New Commercial Centre "MONTEVIDA" in La Alberca with many shops, and amenities. 15 min. to Murcia town, and 20 min. to the coast. Altaona, is the place to live, enjoying the tranquillity , in direct contact with nature, a new chapter in your live, the quality life style you deserve.

 0 slaapkamers  
 altaona village

 0 badkamers  
 altaona golf

directo



Onroerend goed op de markt gebracht door Just Murcia Property

[www.spainpropertyportal.com/nl/](http://www.spainpropertyportal.com/nl/)