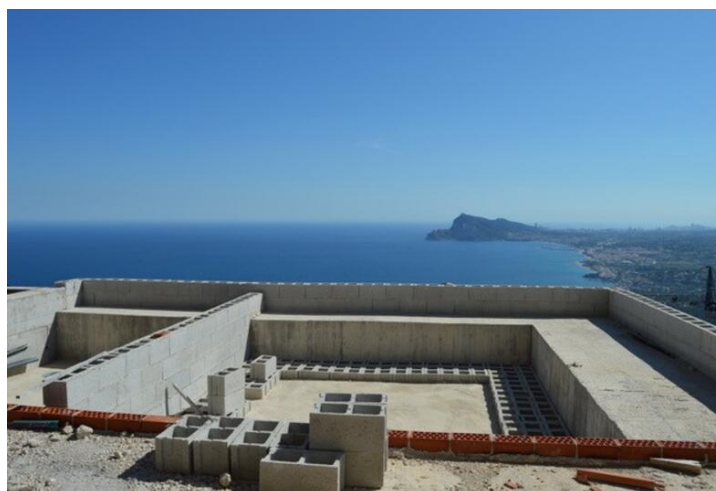


4 Cuarto Villa en venta en Altea, Alicante

3.500.000€



New development of luxury villas in Altea Hills, prices from 3,500,000€.

Villa under construction in Altea Hills with 24-hour surveillance and panoramic sea views. The villa will have 625 m2 of construction, distributed over three floors with both lift and stairs, a total of 4 bedrooms, 4 bathrooms, guest toilet, spacious living-dining room and fully equipped designer kitchen. In the access floor there is a garage for two cars, multipurpose room with guest toilet and a studio apartment. Plot of 1395 m2 with 100% privacy, landscaped with barbecue and infinity pool.

- Villa specification:- PAVEMENTS AND COATINGS: House: Floors (90 x 90 or similar) and coatings (45 x 90 or similar) in porcelain.- TERRACE AND PERGOLAS: Non-slip porcelain finish imitation wood- BATHROOMS AND KITCHENS: Non-slip porcelain finish- PAINTING: Smooth two-coat matt paint on vertical and horizontal parameters in color to be chosen by the property.- PLUMBING: Reticulated polyethylene plumbing installation with PVC stopcocks and drains. Sanitary water in the house with solar support.- SANITARY FITTINGS: Sanitary ware from the Italian brand Catalano or similar. FITTINGS AND SHOWERS: From the GROHE brand or similar.- AIR CONDITIONING: Installation via DAIKIN air conditioning (or similar).- HEATING: Underfloor heating with closed circuits of multilayer polyethylene pipes.- KITCHEN: Top quality high and low furniture equipment, Silestone-type stone worktop, according to project. Appliances: BOSCH induction hob BOSCH Extractor hood Refrigerator BOSCH Combi Oven BOSCH pyrolytic Microwave Grill BOSCH Dishwasher BOSCH- ELECTRICITY, MECHANISMS AND ELECTRICAL PANEL: Bticino keys and switches, Fermax type video intercom installation.- EXTERIOR CARPENTRY: Aluminum with thermal bridge break with modern profiles, CORTIZO brand or similar.- GLASS: Double security glazing 5 + 5 chamber 4 + 4- INTERIOR CARPENTRY: Entrance door made of natural IROKO wood with security points. Passage doors with anti-impact rubber and cabinets with smooth leaf brake doors, finished according to design. Built-in wardrobes dressed in wood. Frames lined with rooster and flashing of the same material.- If you would like further information please do not hesitate to contact us.

🛏 4 dormitorios

🚿 4 baños

🏠 625m² Tamaño de construcción

📏 1.395m² Tamaño de la parcela

Propiedad comercializada por Complete Spanish Property

www.spainpropertyportal.com/es/