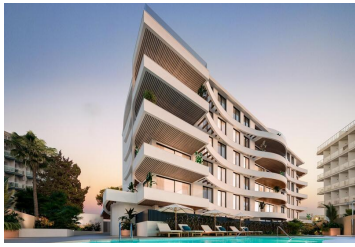




## 2 Schlafzimmer Appartement zu verkaufen in Benalmadena, Málaga

1.038.000€



### NEW BUILD RESIDENTIAL COMPLEX WITH SEA VIEW IN BENALMADENA

New Build residential complex in Benalmadena.

Modern residential of 33 luxurious 1, 2 and 3 bedrooms apartments inspired by the shape of a ship. Its undulating façade is reminiscent of waves and allows the configuration of terraces open to the sea, bathed by the sea breeze.

These luxurious apartments have been meticulously designed to offer you a modern and comfortable lifestyle. With spacious and bright interiors, embellished with high-quality finishes, each room will be an elegant and welcoming space.

All the rooms are open to the outside through large picture windows that bathe the rooms with luminosity, providing brightness and warmth.

The architectural project of this complex is ambitious and captivating, standing out for its design and functionality. In addition, the communal areas have been carefully designed to provide the perfect space to relax and enjoy, while maintaining privacy.

Adjacent to the complex is Puerto Marina, one of the most popular attractions on the Costa del Sol. With a wide range of leisure and entertainment on offer, this charming marina is the perfect place to entertain the whole family.

Furthermore, just a 10 minute walk away, you can enjoy the largest and most popular beach in the area. The

- |                        |                                 |                             |
|------------------------|---------------------------------|-----------------------------|
| 2 Schlafzimmer         | 2 Badezimmer                    | 114m <sup>2</sup> Baugröße  |
| Communal Pool          | Gated                           | Number of Parking Spaces: 1 |
| Views: Sea             | Near Schools                    | Near Commercial Center      |
| Near Bus Route         | Air Conditioning: Pre-Installed | Elevator/Lift               |
| Double Bedrooms: 2     | Beach: 200 Meters               | Terrace: 21 Msq.            |
| Location: Urbanisation | Useable Build Space: 83 Msq.    |                             |

