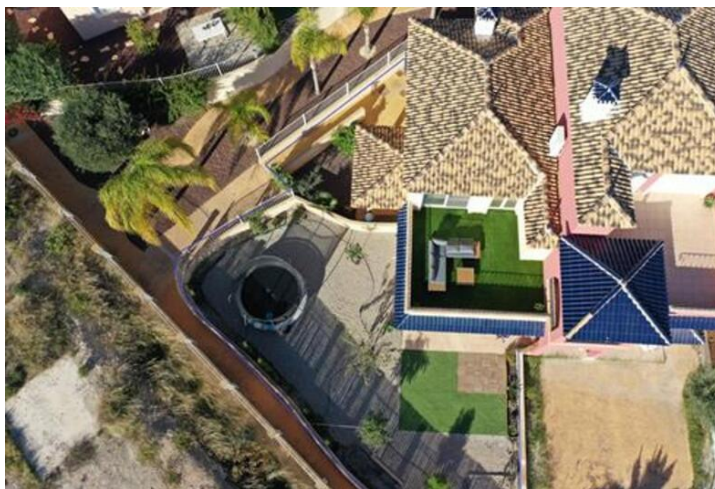








2 soveværelse Lejlighed til salg i Campo de Golf, Murcia




215.000€



Only 1 property built like this in the community, unique ; it is a townhouse in the community of the apartments, with its own private entrance and a private garden of 172m². South west orientated with sun from morning to the sunset. With 141m² built plus 43m² of terraces , exclusive home in ALHAMBRA APARTMENTS in ALTAONA GOLF AND COUNTRY VILLAGE. Entering the plot to access the property you find a little garden ; the kitchen is open plan, toilet and washing room, amazing size for the dining area and the sitting area, from here through french door , you would access to a covered porch and the garden. Going upstairs you have a big solarium with complete open views where you can access from hall or master bedroom. 2 bedrooms 1 with walking wardrobe and big bathroom and a second bedroom with family bathroom next to it. Both rooms with fitted wardrobes. The property is attached to a block of 4 apartments and has a divisor wall in the garden which can be raised to have total privacy. Sells unfurnished . It includes an underground parking space and 12m² lockable storage room. Magnificent pools and garden areas, situated just at the bottom of a natural area, ideal place for running, hiking and biking lovers!!!, breathing peace just 15 min. from main beaches, airport and Murcia city. The property is located in an urbanization at the foot of a mountain area called El Valle; with walking access to the path towards the mountains for hiking and biking lovers, a place where your children could play outside and ride their bikes on the street with no stress for you. The opening of the NEW CORVERA AIRPORT is having a great impact on the adjacent Resorts. The Club House and the golf course are fully open. The location of this complex is ideal and very convenient, only: •15 min. Murcia center •20 min. Beach •5 min. new airport •8 min. new shopping center in La Alberca. •10 minutes. Hospital Arrixaca We invite you to a visit, sure you will love it!!

 2 soveværelser
 250m² Grundstørrelse
 Golf

 3 badeværelser
 Svømmepøl
 directo

 185m² Byg størrelse
 altaona golf
 altaona golf and country village



Ejendom markedsført af Just Murcia Property

www.spainpropertyportal.com/da/