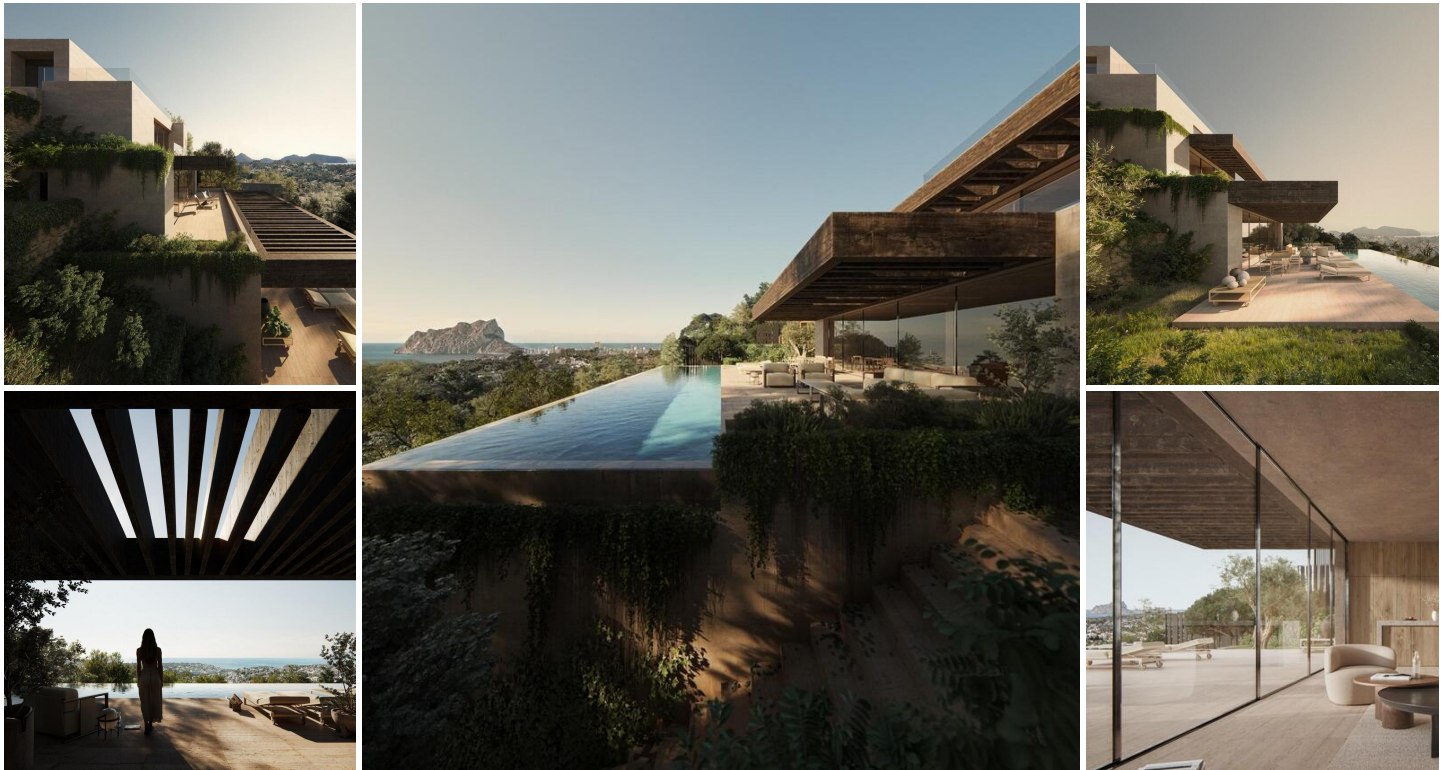


4 soveværelse Villa til salg i Benissa, Alicante

4.250.000€



NEW BUILD VILLA IN BENISSA New Build villa designed to dialogue with its surroundings and integrate into it. Its structure, based on concrete platforms and wooden pergolas, slides along the natural slope of the land, creating the interior living spaces. Access to the house is through a cassette that offers panoramic views of the surrounding area. Descending to the first level, we find the master bedroom with its own dressing room, bathroom and terrace. A platform for an en suite bedroom with all the privacy and intimacy possible. Going further down, we find another platform with the rest of the rooms of the house. A total of three spacious bedrooms with en suite bathroom and terrace occupy this space. The third level is occupied by the day area. Two separate living-dining room and kitchen areas, which can be joined by separating the sliding door that separates them. Leaving a single open-plan space that connects directly with the exterior through four sliding panels. A fluid exterior-interior space that allows you to enjoy the house with the breeze and views of the outside. Finally, in the basement, there is a large leisure space, games room, TV and bar and a gym room. Both rooms are flooded by the light that enters through the openings in the swimming pool and through which the light enters, filtered by the brightness of the water. A home with exceptional finishes that give it warmth and that at the same time dialogue with the pool.

TECHNICAL CONTROL AND DECENIAL INSURANCE-10-year structural damage liability insurance.-Building quality control by a certified testing laboratory.-Energy control performed by an accredited company.-Technical Inspection Control (OCT) by an accredited company.-Installation of a closed-circuit video intercom system with panoramic access view.

EXTERIOR-Infinity pool.-Exterior boundary wall made of masonry and metal fencing.-Glass balustrades embedded on terraces.-LED recessed lighting around the perimeter of the house.-Motorized main garage access door, HORMANN brand or equivalent.-Landscaped garden with trees and an irrigation system.-Paved access ramp and parking area with cobblestones.

PLUMBING AND ELECTRICITY-Home automation system controlling blinds, pool lighting, exterior lighting, and video intercom.-JUNG electrical fittings.-Underfloor heating and ducted air conditioning with independent thermostats in each room, AIRZONE system. White porcelain sanitary fixtures, furniture, sinks, and fittings by BOCA, HANSCBOHE, and CEREDIT.

🏠 4 soveværelser

🛁 6 badeværelser

🏠 654m² Byg størrelse

📏 1.017m² Grundstørrelse

✅ Svømmebøl

✅ Near Commercial Center



Ejendom markedsført af España Dream Properties

www.spainpropertyportal.com/da/

Private pool

Elevator/Lift