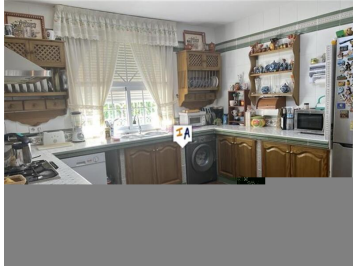


4 soveværelse Landsted til salg i Alquife, Granada

88.500€



A fully renovated rustic house for sale, over 3 floors with spectacular roof terrace and direct views to the Sierra Nevada Mountain peaks and ski range. This home was the former village schoolhouse. Sold mostly furnished, ready to begin using. Located in the lovely village of Alquife, Granada located at the edge of the national park. Beautiful surroundings and the perfect location to use as a full-time home or guesthouse. 1 hour off the Almeria coast and from Granada. The historic city of Guadix, Granada is a 20 min. drive away. ----- Full Video Tour Available. -----

The layout is made as an upside-down house to put the eating and kitchen areas next to the roof terrace so you can entertain friends or eat al-fresco in the Spanish sunshine. The home's layout is as follows: Ground Floor: Downstairs are two wooden beamed rooms with interconnecting double doors with connecting doors, ideal reception rooms or one ground floor reception room and an option to use the other as a fourth bedroom. pull the blinds down and have one or two extra bedrooms. The fireplace is exactly as when the place was built in the 1920's, complete with a place for logs. Opposite the bedrooms is a downstairs toilet for the downstairs bedrooms. And finally the piece-de-resistance. A secret room that was originally blocked up. One of the best places in the house, and it's cool in the summer and warm in the winter. Ideal chillout space or storage. -----

First Floor: 3 bedrooms, a family bathroom with corner bath AND a walk-in shower, and an upstairs lounge with two balconies. The master bedroom is at the front of the house and has its own balcony. The second bedroom has a skylight. The third bedroom has sleeps 3, and has storage. -----

Top Floor: The kitchen/dinner and living room are on the top floor, Next to the living room is the fitted kitchen. So after you've spent some time preparing that great dinner, why not enjoy it on the 35sqm (376 sq. ft.) roof terrace while looking over the snowy peaks of the Sierra Nevada Mountains? -----

The property is located in the village of Alquife, Granda which has around 800 inhabitants. Within a 10 minute walk from the house is a supermarket which has a traditional butchers and deli counter and good cheap wines. a

 Se videotur

 4 soveværelser

 2 badeværelser