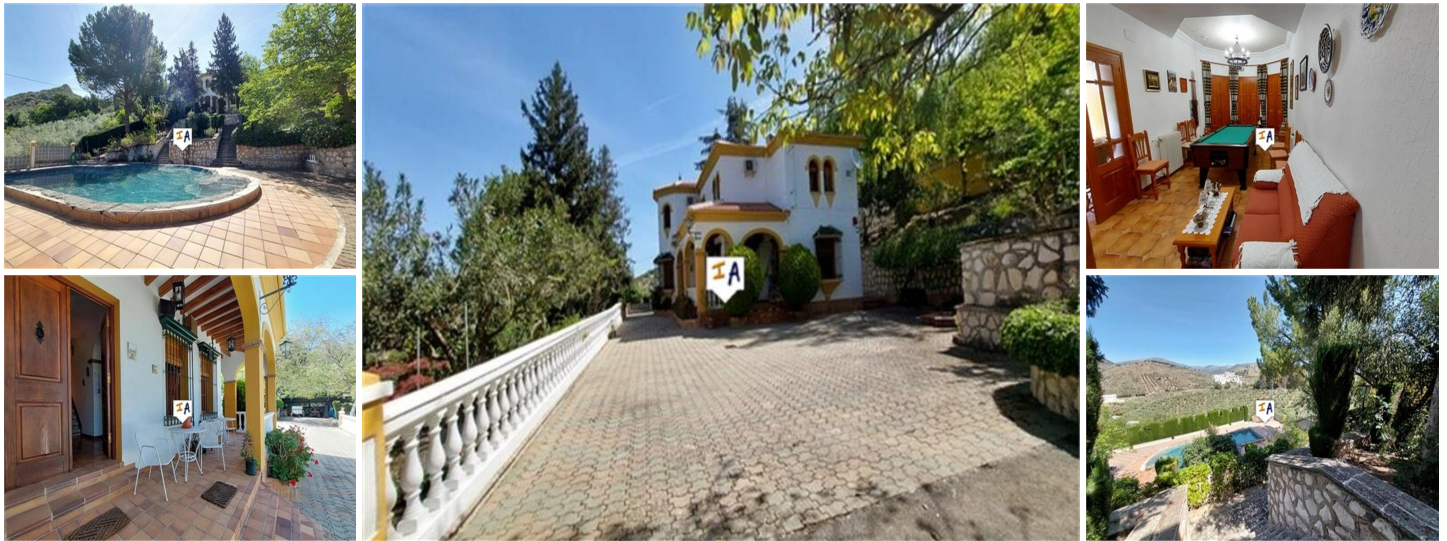


4 soveværelse Landsted til salg i Carcabuey, Córdoba

459.000€



This Stunning, Detached, Spacious Countryside property is situated in the centre of the Parque Natural de la Sierras Subbeticas, a beautiful part of Andalucia, close to the town of Carcabuey in the province of Cordoba, Andalucia, Spain. The beautifully presented 454m² build Cortijo is set back from a quiet road and sits on a very generous plot size of 4,775m². The impressive gated entrance with a private drive leads through part of your mature gardens up to the Cortijo. The main entrance to the property is from the front terrace passing a covered patio space into a wide reception area with a dining room, currently used as a games room, to the left leads into the fitted kitchen. Off the reception area is a ground floor shower room and opposite is a spacious lounge with a separate dining area. A quality staircase takes you to the first floor landing from where you have a master bedroom with an en-suite shower room to the right, on the left is a fully tiled bathroom, a good size double bedroom, a twin bedroom and opposite another twin bedroom. From the wonderful front terrace there are steps leading down to the fabulous private swimming pool area which also has an outbuilding housing a toilet and wash room as well as storage for the pool equipment. The extensive grounds have been tiered and paved to allow for easy maintenance of the mature planting as well as offering spectacular countryside and mountain views throughout the property.

- | | | |
|---|---|---|
|  4 soveværelser |  4 badeværelser |  454m ² Byg størrelse |
|  4.775m ² Grundstørrelse |  Svømmepøl |  Air Conditioning |
|  Central Heating |  Charming Property |  Detached |
|  En Suite Bathroom |  Fitted Kitchen |  Fruit Trees |
|  Full of Character |  Garden |  Guest Apartment |
|  Guest Toilet |  Ideal Family Home |  Ideal for Country Lovers |
|  Immaculate Condition |  Internet |  Off Road Parking |
|  On Street Parking |  Parking Space |  Part Furnished |